

Overview

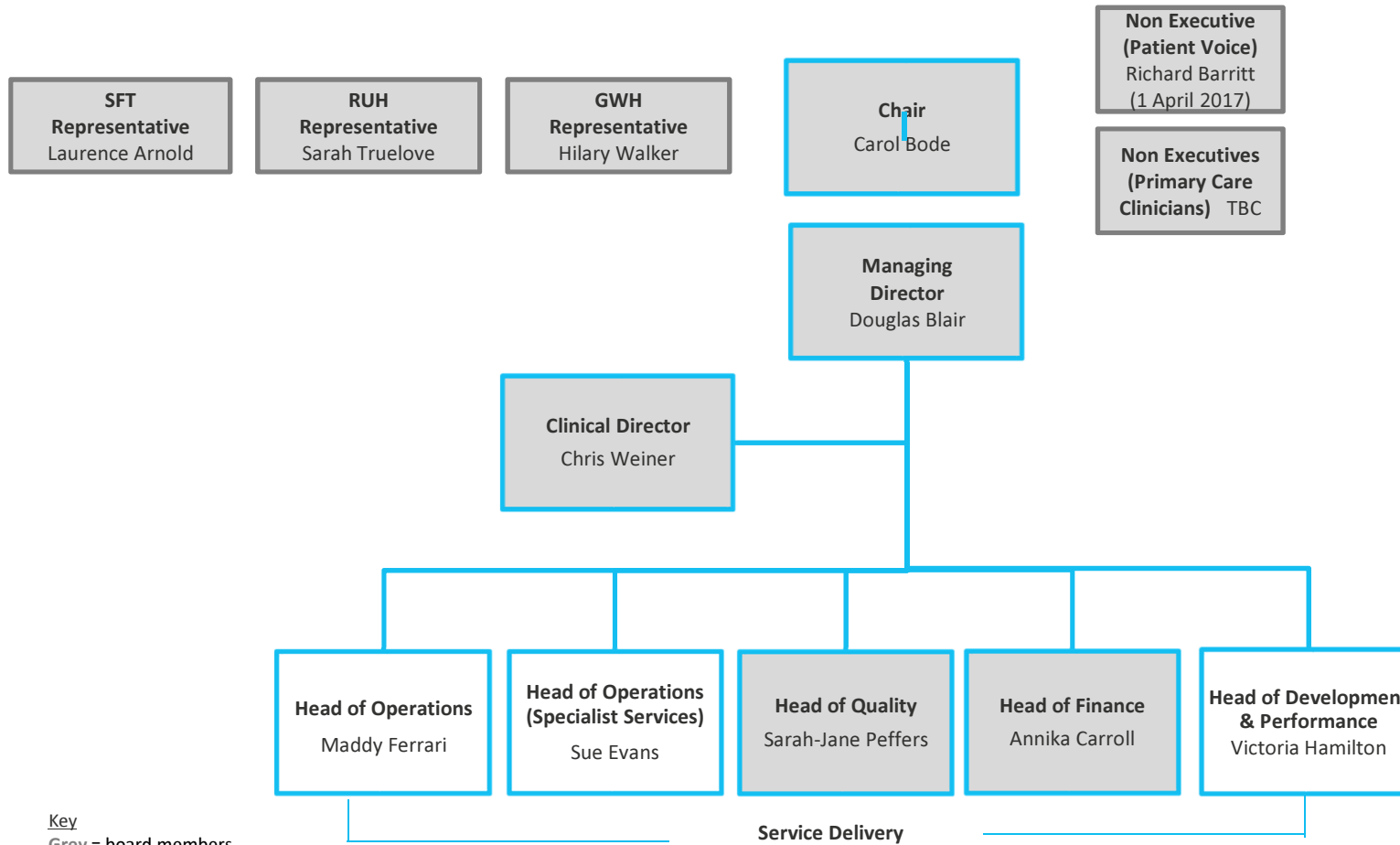
Douglas Blair, Managing Director

Health Select Committee
7 March 2017

What is Wiltshire Health and Care?

- Wiltshire Health and Care partnership is formed by the three local Foundation Trusts which serve Wiltshire:
 - Great Western Hospitals NHS Foundation Trust
 - Royal United Hospital Bath NHS Foundation Trust
 - Salisbury NHS Foundation Trust
- We are a partnership, focused solely on delivering improved community services in Wiltshire
- We have been responsible for the delivery of adult and some children's community health services in Wiltshire from 1 July 2016, for at least 5 years
- A unique partnership – breaking new ground

Who are Wiltshire Health and Care?



Key
 Grey = board members

What are adult community services?

- Core Community Teams
- Community Hospitals
- Community Geriatrician
- Community Neurological Services
- Speech and Language Therapy
- Minor Injury Units
- Continence
- Community Team for Learning Disabilities
- Hearing Therapies
- Diabetes
- Dietetics
- Podiatry
- Outpatient Physiotherapy
- Orthotics
- Wheelchairs
- Respiratory Services
- Tissue Viability and Lymphoedema Service
- Fracture Clinics at Community Hospitals
- Support for Outpatients in the Community
- Intermediate Care

c. 900 staff

In a typical month....

8,000 referrals

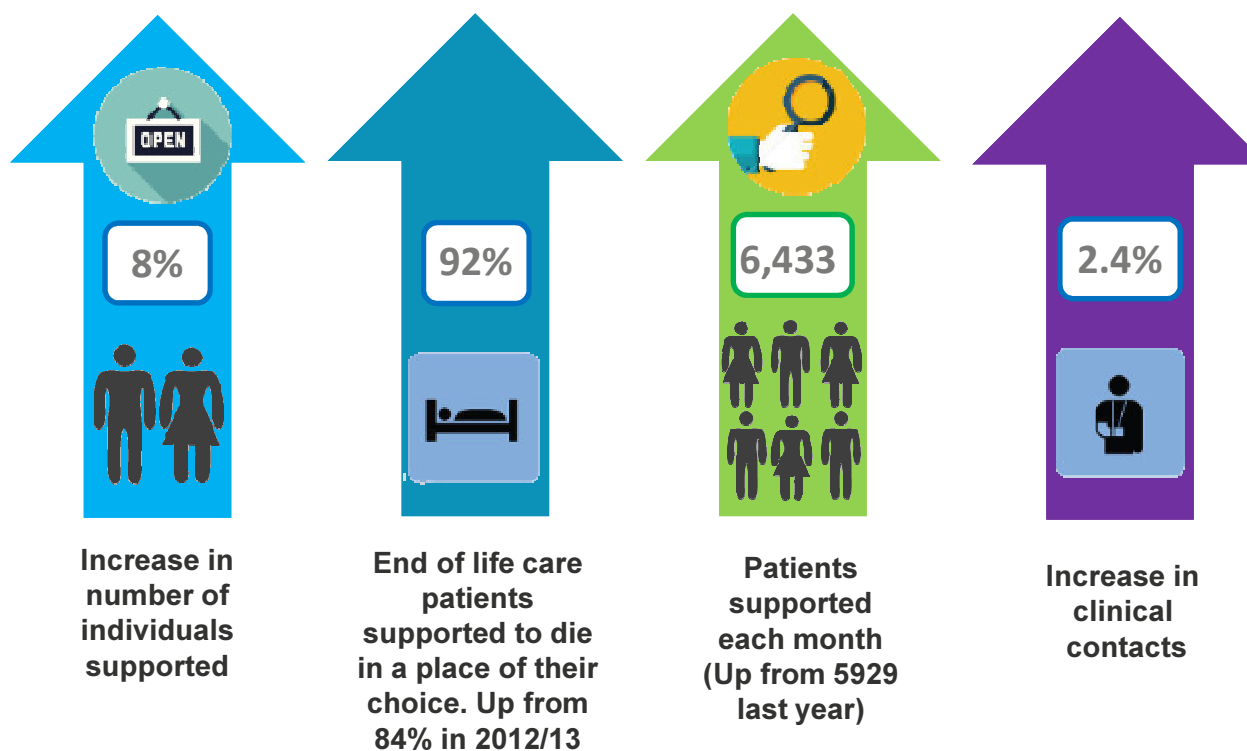
45,000 contacts with patients for all services

100,000 miles travelled

6,500 individuals supported by our community nursing/therapy teams

2500 attendances at our Minor Injury Units

Community Teams have delivered improved efficiency at a time of increased pressure...



2016/17 – five main areas of change

Higher Intensity Care	<ul style="list-style-type: none"> • new systems and processes for delivering higher intensity care in patient's homes • additional mobile ECG machines to support care • establishment of weekly multidisciplinary meetings between community clinical leads and community geriatricians 	New process launches March 2017 Further development in 2017/18
Stroke Early Supported Discharge	<ul style="list-style-type: none"> • establishment of two specialist teams (north and south) • establishing multi-disciplinary teams of nurses, therapists, speech and language therapists, stroke coordinators and consultants 	Recruitment to new teams. Launch of pathway from May 2017.
Mobile working	<ul style="list-style-type: none"> • provision of mobile hardware to c. 400 staff, to support their work • Reduce wasted time • Real time access and updates to clinical records 	Roll out completed December 2016
Home First	<ul style="list-style-type: none"> • adding additional rehabilitation support workers to teams • facilitating a discharge to assess model • delivering all immediate home based post-discharge support • simplifying pathways 	Recruiting – expecting to have all new staff by April 2017
Health coaching	<ul style="list-style-type: none"> • roll out of health coaching training to front line community staff, to ensure that every opportunity is taken to support patients, carers and their families with preventing ill health. 	Complete

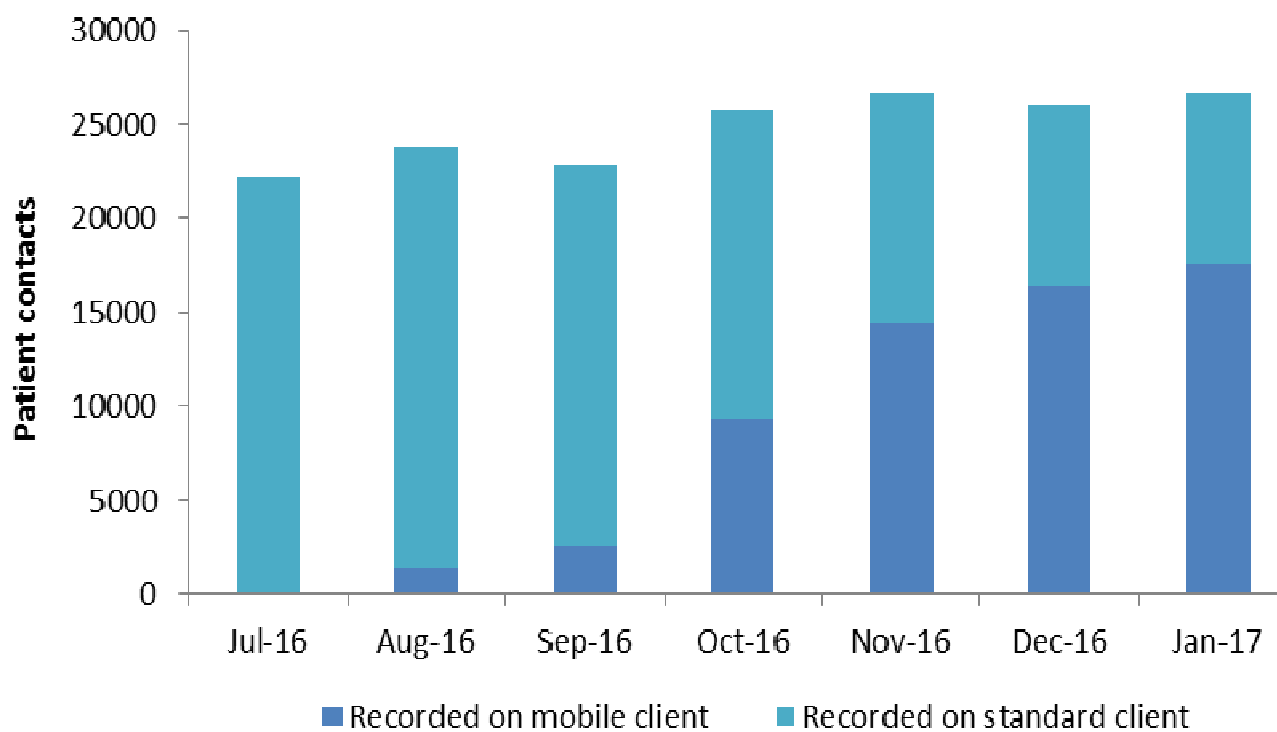
Mobile working





Implemented on time and benefits realised

Face to face contacts by Community Teams



Rollout of mobile devices to our community teams started in August 2016.

By January 2017, at least 66% of face to face contacts were recorded using mobile working.

Some feedback...

“I have been able to use the device to see 11 patients this morning. I was thrilled that I didn’t have to go back to base to input all observations and assessments from those visits onto SystmOne. I estimate this has saved me about an hour and a half of admin time.” **(District Nurse, Trowbridge).**

“In attendance at an multi-disciplinary meeting in primary care, I was able to refer to SystmOne and give real time clinical updates to the team on my patients’ progress and condition which was fully up to date, using the SIM card connection to update the record out of the office.” **(Therapist at Amesbury)**

Planning for the future

Plan for 2017-19 will include:

- Keep going:
 - Higher Intensity Care
 - Stroke Early Supported Discharge
 - Home First
- Re-design/review of services:
 - Musculo-skeletal physiotherapy
 - Learning Disabilities
 - Urgent Care services (following outcome of an ongoing tender)
- Modernising infrastructure
- Playing part in system transformation, delivery of Sustainability and Transformation Plan

What might the future hold?

- A role for Wiltshire Health and Care to play in:
- Increasing integration of services across the system
- Forming new partnerships, working more closely together with primary care, voluntary sector, mental health services and social care services.
- Design and development of accountable care system for Wiltshire – linked to Sustainability and Transformation Plan objectives.



Wiltshire
HEALTH AND CARE

www.wiltshirehealthandcare.nhs.uk

Working in partnership

Great Western Hospitals NHS Foundation Trust
Royal United Hospitals Bath NHS Foundation Trust
Salisbury NHS Foundation Trust